

Control-M for SAP®

Optimize and modernize your key SAP processes with Control-M

PRODUCT DESCRIPTION

Control-M for SAP®, an SAP-certified solution, creates and manages SAP ECC, SAP S/4HANA, SAP BW, data archiving jobs, and supports any application in the SAP ecosystem, eliminating time, complexity, and specialized knowledge.

BUSINESS CHALLENGE

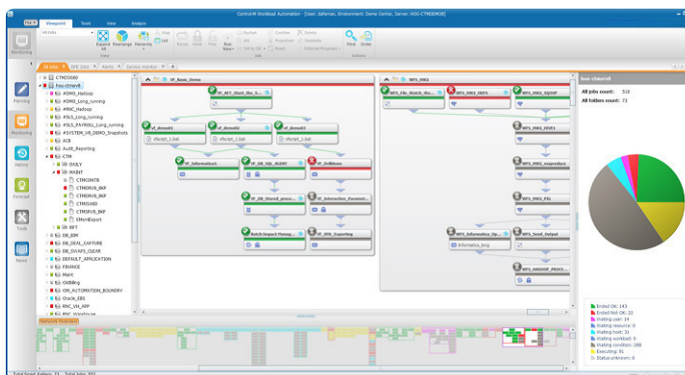
Businesses are often challenged to orchestrate application and data workflows across SAP and non-SAP source systems. Workflow visibility, scheduling, and monitoring are all problematic due to the size and complexity of SAP landscapes. When critical workflows fail, they are often not addressed in a timely manner. In some cases, less critical workflows are ignored completely due to sub-par SAP system monitoring. Businesses depend on IT to provide constant monitoring and quick resolution. When a critical business workflow fails, delays are detrimental to digital transformation and modernization efforts.

BMC SOLUTION

Control-M helps businesses create, manage, and orchestrate complex SAP services, jobs, processes, and workflows. Users can easily automate processes across on-premises, cloud, and hybrid environments. It allows users to optimize and modernize key SAP processes for faster delivery of applications. With a single unified view, users can define, schedule, manage, and monitor SAP jobs and all other workflows—without custom scripts. Companies get end-to-end visibility of all business services, which improves SLA performance and enhances service delivery. Control-M’s capabilities and integration with SAP provide several benefits for day-to-day operations and bring automation and assurance to key tasks during upgrades and migrations, which pave the way for SAP S/4HANA upgrades.

KEY FEATURES

- Easily create, manage, and orchestrate complex SAP services, jobs, processes, and workflows, across on-premises, cloud, and hybrid environments
- Centralized orchestration for SAP ensures faster delivery of business services
- Securely manage the dependencies and silos between SAP and non-SAP tasks (e.g., file transfers, database access) and centralize management of scheduling activities
- Flexible, intuitive user interface allows users to build automated workflows with low-code wizards, templates, and a drag and drop UI



Control-M provides a clear view of workflows and displays SAP jobs in the same interface as other enterprise workflows.

PRODUCT DETAILS

Enterprise visibility: Control-M for SAP provides deep integration and broad visibility for SAP ECC, SAP S/4HANA, SAP BW, data archiving, process integration, and business object jobs through a single, powerful workflow orchestration platform, resolving cross-application and cross-platform automation challenges. It also provides a 360-degree view of data pipelines at every stage.

Ease of use: Everything is managed within a robust framework—no more scattered views, scripting, or manual intervention. SAP job definitions can be imported into Control-M through conversion tools, so existing jobs don't have to be redeveloped. It provides advanced rerun flexibility and offers a facility to run and monitor processes from mobile and tablet devices.

Streamlined business processes: Complex scenarios can be tailored and customized within Control-M for the effective management of all complex processes. Control-M can streamline processes like O2C, P2P, payroll, year-end/month-end closing, archiving, and much more.

Enhanced system performance and availability: Control-M helps companies cut operational costs, improve efficiency, and increase performance. Problematic workflows can be identified before they fail, reducing unnecessary system downtime and improving system performance and availability.

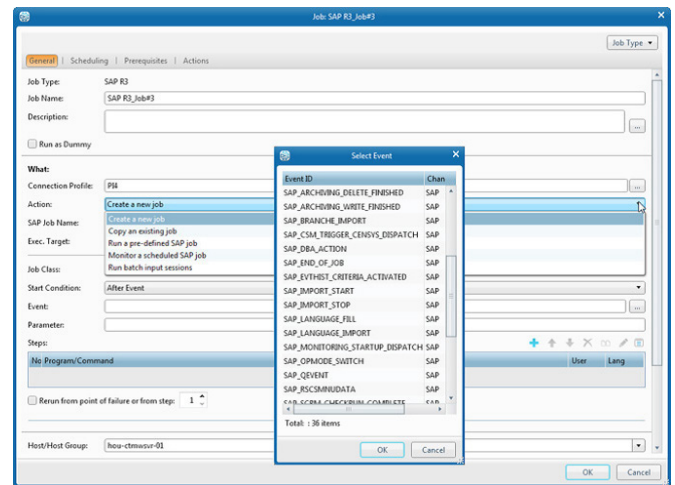
Act-on-event triggers: SAP provides triggers that report important developments such as system startups, shutdowns, database updates, and business events. Control-M automatically and instantly acts on these triggers by continuously monitoring them and launching user-defined follow-ups. This helps IT teams prevent outages and ensure reliable workflow execution.

Spawned child jobs and job interception: Control-M provides full child job management and intercepts user-submitted jobs so unplanned job activity does not consume production resources and result in service delays.

Control-M Application Integrator extends capabilities: Control-M Application Integrator is a design tool that lets you extend workflow orchestration to any application in the SAP ecosystem, including Concur® and Fieldglass®.

Modernize with cloud: Control-M orchestrates workflows on all cloud variations, including public, private, or hybrid environments.

Audit and compliance ready: With Control-M, users achieve full compliance, security, and governance across business processes.



Control-M provides a simple alternative to scripting for creating and managing SAP R/3, and other SAP jobs.

Your partner for Control-M:



www.apsware.com - info@apsware.com

About BMC

BMC works with 86% of the Forbes Global 50 and customers and partners around the world to create their future. With our history of innovation, industry-leading automation, operations, and service management solutions, combined with unmatched flexibility, we help organizations free up time and space to become an Autonomous Digital Enterprise that conquers the opportunities ahead.

BMC—Run and Reinvent



BMC, the BMC logo, and BMC's other product names are the exclusive properties of BMC Software, Inc. or its affiliates, are registered or pending registration with the U.S. Patent and Trademark Office, and may be registered or pending registration in other countries. SAP, SAP R/2, SAP R/3, and all other SAP products are trademarks or registered trademarks of SAP SE in Germany and in several other countries. All other trademarks or registered trademarks are the property of their respective owners. ©Copyright 2022 BMC Software, Inc.

